

MD 80, DC-9, B-717 Tow Bar
Equipment Manual

Use This Manual for

- 1. Operating Procedures**
- 2. Maintenance Procedures**
- 3. Tow Bar and Parts Ordering**

For ordering new Tow Bars or Renewable Parts

Please contact:

Hall Industries Equipment Division
One USS Industrial Park
Ellwood City, PA 16117
Phone (724) 752-2000
FAX (724) 752-8666

MD 80, DC 9, B-717 EQUIPMENT MANUAL

SECTION I Description – Dimensions and Weights

SECTION II Operating Procedures

SECTION III Maintenance Procedures

SECTION IV Renewal Parts

**SECTION I
DESCRIPTION – DIMENSIONS AND WEIGHTS
MD 80, DC 9, B-717 TOW BAR ASSEMBLY
TB-9205**

Weight:

Body	110#
Head with Adapter	110#
Tow Bar, COMPLETE	220#

Length:

Body with Tow Eye	111”
Head with Adapter	41”
Total Assembly	152”

Width:

Yoke	48”
------	-----

Height:

Body	26”
Yoke	12”

SECTION II
OPERATING PROCEDURE
MD 80, DC 9, B-717 TOW BAR ASSEMBLY

A. ATTACHING TOW BAR TO AIRCRAFT

The aircraft can be towed forward or pushed aft on hard surfaces using a yoke-type Tow Bar. The Tow Bar attaches to the nose wheel axle by means of the extension pins on the yoke. When the tow bar yoke is lined up with the nose gear, the extension pins have to be manually locked in position on both sides of the nose gear by the operator.

B. ATTACHING TOW BAR TO TOW TRACTOR

Once the tow bar is securely attached to the nose gear, the tow tractor should be placed at the centerline of the Tow Bar. The operator must manually lift the tow bar to engage with the tow tractor and install the locking pin.

C. PUSHING THE AIRCRAFT

This must be done in accordance with the instructions in McDonnell Douglas Facility and Equipment Planning Manual.

CAUTION: If at any time the jack knife protection torque shear bolt yields or breaks, carefully bring the aircraft to a stop. Before pushing or tow can be continued a new jack knife protection torque shear bolt must be inserted. Use only a Hall Industries shear bolt as follows, Part Number TB-9205-2, (7,760#).

D. DISCONNECTING TOW BAR FROM AIRCRAFT

Release the extension pins manually to release the yoke from the nose gear on the aircraft. Carefully move the tow bar and tow tractor clear of the aircraft.

SECTION III
MAINTENANCE PROCEDURES
MD 80, DC 9, B-717 TOW BAR ASSEMBLY

- A. Check wheels and wheel castors for bent, broken, or worn parts and security. Lubricate pivot points. Lubricate wheel bearings.
- B. Check yoke assembly for operation of lock mechanisms, spring wear and free movement of locking pins. Lubricate pivot points.
- C. Inspect yoke assembly for worn or damaged parts and security.
- D. Check tow eye on tow bar for condition and security.
- E. Check tow bar main body tube for bending or cracking.
- F. Check shear pin and bushings for breakage, wear and security.
- G. Clean, repaint or touch-up paint as required.
- H. Inspect for missing or illegible instruction plaques. Replace as required.
See Attachment #1

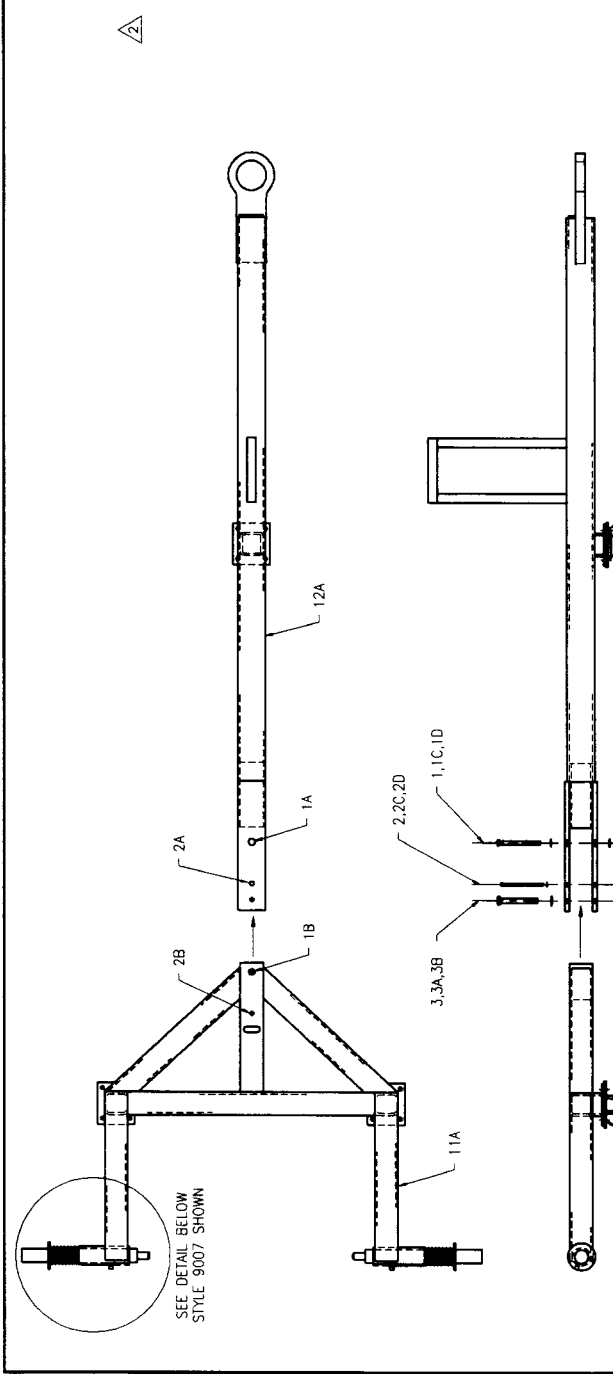


SECTION IV
RENEWAL PARTS
MD80, DC9 TOW BAR ASSEMBLY

MD80, DC9 TOW BAR ASSEMBLY
DWG TB-9205

Table with 4 columns: MK #, QTY / UNIT, DESCRIPTION, PART NUMBER. Lists various components like DC9/MD80 TOWBAR COMPLETE, PIVOT BOLT, BUSHING, FLANGED, etc.

PKT #	QTY	UNIT	DESCRIPTION
1	1	1	DOMINCO TOWBAR COMPLETE
1A	1	1	PIVOT BOLT
1B	2	2	BUSHING, FLANGED
1C	2	2	BUSHING, STRAIGHT
1D	1	1	WASHER, FLAT
1E	1	1	LOCKWASHER PROTECTION TORQUE SHEAR BOLT
2A	2	2	BUSHING, FLANGED
2B	2	2	BUSHING, STRAIGHT
2C	2	2	FLAT WASHER
2D	1	1	LOOKOUT
3A	3	3	CAPTURE BOLT
3B	1	1	FLAT WASHER
3C	1	1	LOOKOUT
4	2	2	SPRING
5	2	2	ROCK CAP SCREW
6	2	2	ROCK PIN
7A	2	2	LATCH PIN
7B	2	2	SPRING
7C	2	2	LATCH PIN BRACKET
7D	2	2	SOCKET HEAD CAP SCREW
8	2	2	INSERT, TALE PIN
8A	2	2	ROLL PIN
9	2	2	CASTER, RIGID
10A	1	1	BOLT
10B	1	1	LOOKOUT
11A	1	1	YOKER ASSEMBLY COMPLETE
11B	1	1	YOKER ASSEMBLY WITH BUSHINGS (LESS ATTACHING PARTS)
11C	1	1	YOKER ASSEMBLY
12	1	1	TOW BAR BODY WITH BUSHINGS
12A	1	1	DOMINCO TOWBAR COMPLETE (REPAIR UNIT)



ONE --- ITEM 12 --- PUSHBAR ASSEMBLY
HALL PART #TB-9205-12

ONE --- ITEM 11 --- YOKE ASSEMBLY
HALL PART #TB-9205-11

NOTES:
 1. SEE ITEM DETAIL DRAWINGS FOR PAINT SPECIFICATIONS
 2. PART NUMBERS CONSIST OF MARK NO. SHOWN IN BILL OF MATERIALS WITH PREFIX TB-9205- (ie. SWIVEL CASTER PART NO. WOULD BE TB-9205-10.)
 3. NEW TOWBARS ARE BUILT WITH STYLE 9007 PIN.
 PARTS SHOWN ARE STILL AVAILABLE FOR REORDER FOR STYLE 9007-1 PIN.

REV	DATE	BY	CHKD	DESCRIPTION
020	1/15	XXX	XXX	FUNCTIONAL
021	1/16	XXX	XXX	FUNCTIONAL
022	1/16	XXX	XXX	FUNCTIONAL
023	1/16	XXX	XXX	FUNCTIONAL
024	1/16	XXX	XXX	FUNCTIONAL
025	1/16	XXX	XXX	FUNCTIONAL

REV	DATE	BY	CHKD	DESCRIPTION
020	1/15	XXX	XXX	FUNCTIONAL
021	1/16	XXX	XXX	FUNCTIONAL
022	1/16	XXX	XXX	FUNCTIONAL
023	1/16	XXX	XXX	FUNCTIONAL
024	1/16	XXX	XXX	FUNCTIONAL
025	1/16	XXX	XXX	FUNCTIONAL

REV	DATE	BY	CHKD	DESCRIPTION
020	1/15	XXX	XXX	FUNCTIONAL
021	1/16	XXX	XXX	FUNCTIONAL
022	1/16	XXX	XXX	FUNCTIONAL
023	1/16	XXX	XXX	FUNCTIONAL
024	1/16	XXX	XXX	FUNCTIONAL
025	1/16	XXX	XXX	FUNCTIONAL

REV	DATE	BY	CHKD	DESCRIPTION
020	1/15	XXX	XXX	FUNCTIONAL
021	1/16	XXX	XXX	FUNCTIONAL
022	1/16	XXX	XXX	FUNCTIONAL
023	1/16	XXX	XXX	FUNCTIONAL
024	1/16	XXX	XXX	FUNCTIONAL
025	1/16	XXX	XXX	FUNCTIONAL

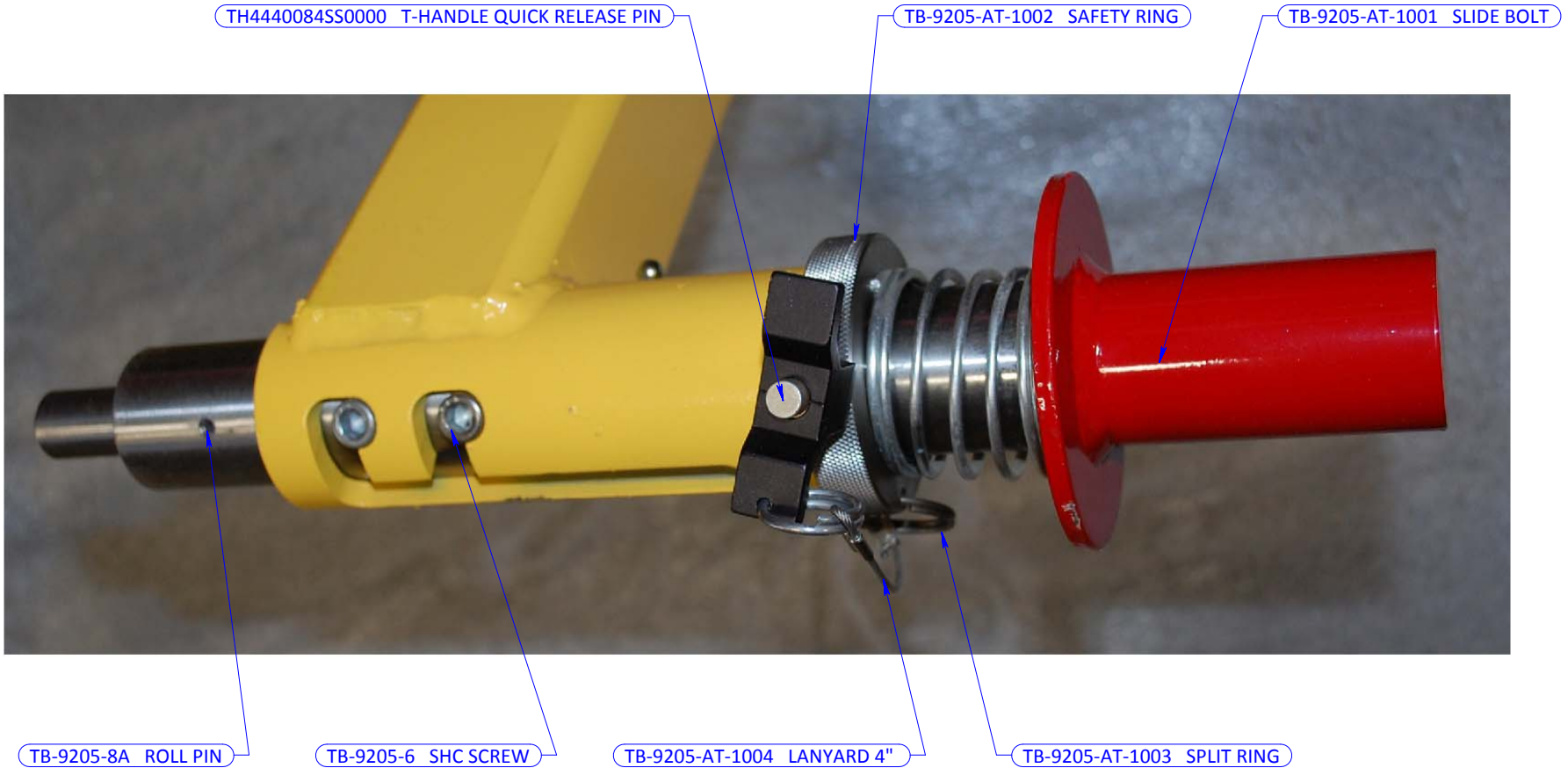
REORDER PARTS FOR
 STYLE 9007-1
 SHAFT ASSEMBLY

STYLE 9007
 SHAFT ASSEMBLY

ORDERING INFO:

1. TO ADD TO THE LOCKING FEATURE TO A EXISTING 9205 BAR
YOU WILL NEED TO PURCHASE TWO OF NUMBER ~ TB-9205-AT-1001-KIT
2. TO PURCHASE A NEW TOWBAR HEAD WITH THE LOCKING FEATURE INSTALLED
YOU WILL NEED TO PURCHASE NUMBER ~ TB-9205-AT-11
3. TO PURCHASE A NEW COMPLETE TOWBAR
YOU WILL NEED TO PURCHASE NUMBER ~ TB-9205-AT

REVISIONS				
REV	DESCRIPTION	DATE	BY	CHK



© 2013 HALL INDUSTRIES, INC. ALL RIGHTS RESERVED.

HALL INDUSTRIES, INC. PROPRIETARY RIGHTS ARE INCLUDED IN THE INFORMATION DISCLOSED HEREIN. RECIPIENT, BY ACCEPTING THIS DOCUMENT, AGREES THAT NEITHER THIS DOCUMENT NOR THE INFORMATION DISCLOSED HEREIN NOR ANY PART THEREOF SHALL BE REPRODUCED OR TRANSFERRED TO OTHER DOCUMENTS OR USED OR DISCLOSED TO OTHERS FOR MANUFACTURING OR FOR ANY OTHER PURPOSE EXCEPT AS SPECIFICALLY AUTHORIZED IN WRITING BY HALL INDUSTRIES, INC.

UNLESS OTHERWISE SPECIFIED DIMENSIONS ARE IN INCHES		hi 514 Mecklem In Ellwood City, PA 16117 <i>Hall Industries, Inc.</i>	
TOLERANCES ANGLE .XX .XXX $\pm 0.5^\circ$ $\pm .01$ $\pm .005$ $X < 12" = \pm 1/32"$ $X > 12" = \pm 1/16"$		PROJECT	AV ~ 9205
THIRD ANGLE PROJECTION		FILE NAME	TB-9205-AT-11 YOKE ASSEMBLY AIRTRAIN
CHECK DC DATE 7/19/2013		DESCRIPTION	YOKE ASSEMBLY AIR TRAN
DRAWN BJE DATE 7/19/2013		SIZE	DWG/PART NO.
SCALE 1:1		A	TB-9205-AT-11
WEIGHT: N/A		REV	0
SHEET 1 OF 1			